

Plant Biology and Weed Identification

National Railroad
Contractors Association



Grass Characteristics

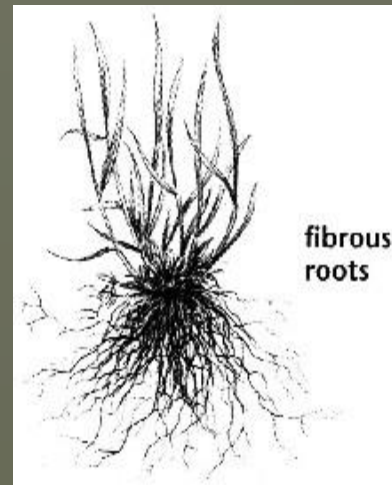
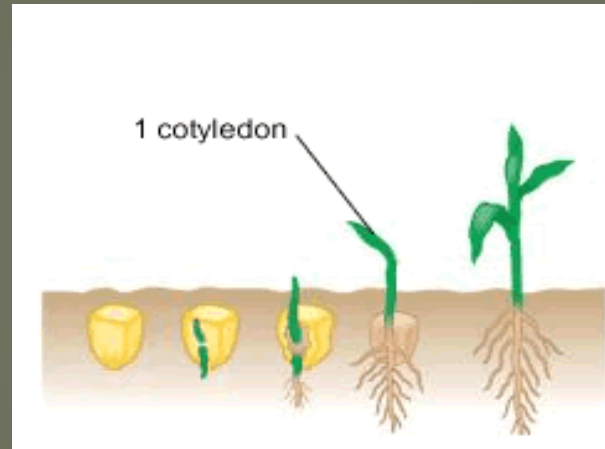
Narrow upright leaf

Parallel veins



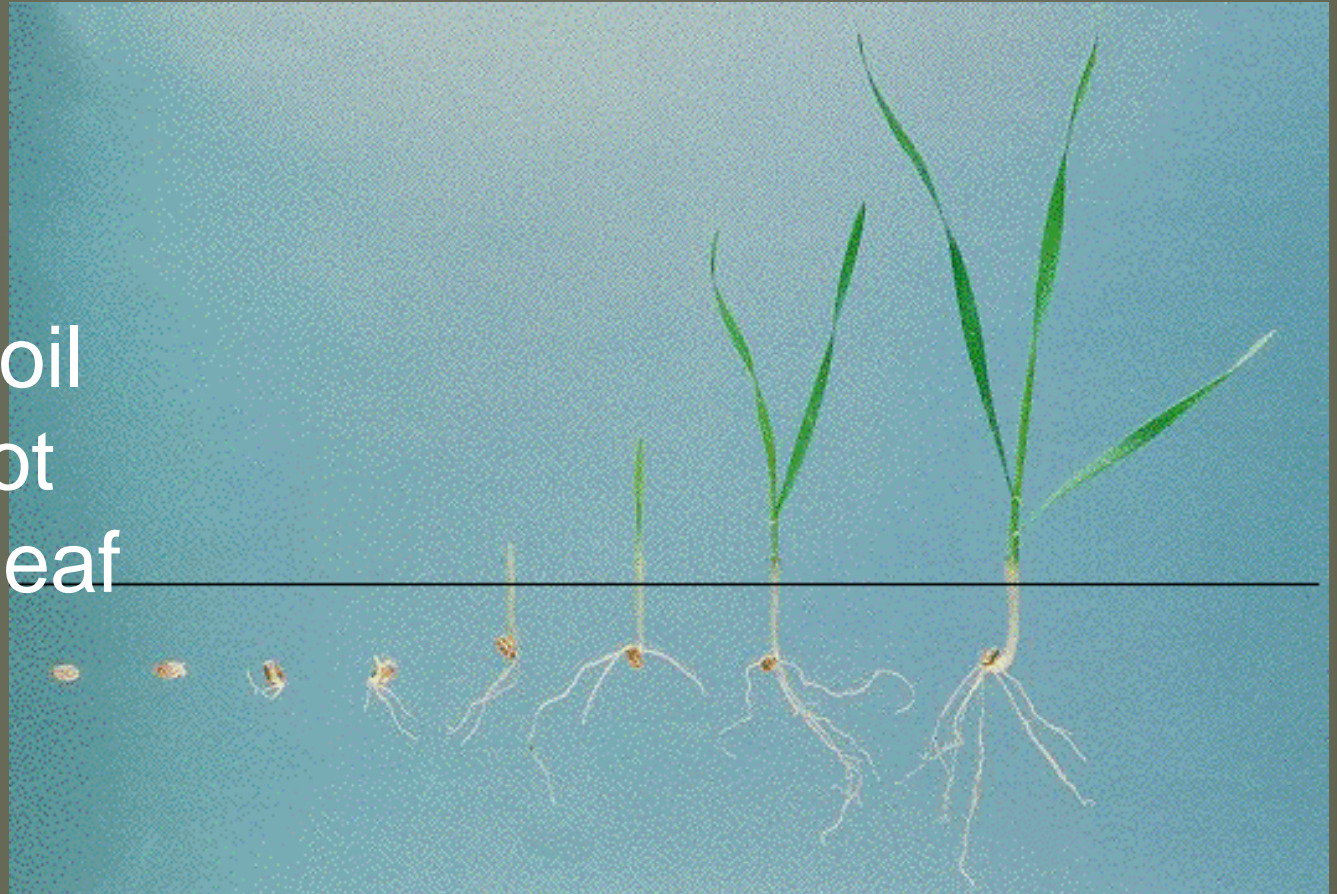
Grass Characteristics

- One leaf at germination
- Fibrous root system



Grass Characteristics

- Growing points at soil surface, not along the leaf



Plant Construction Grass

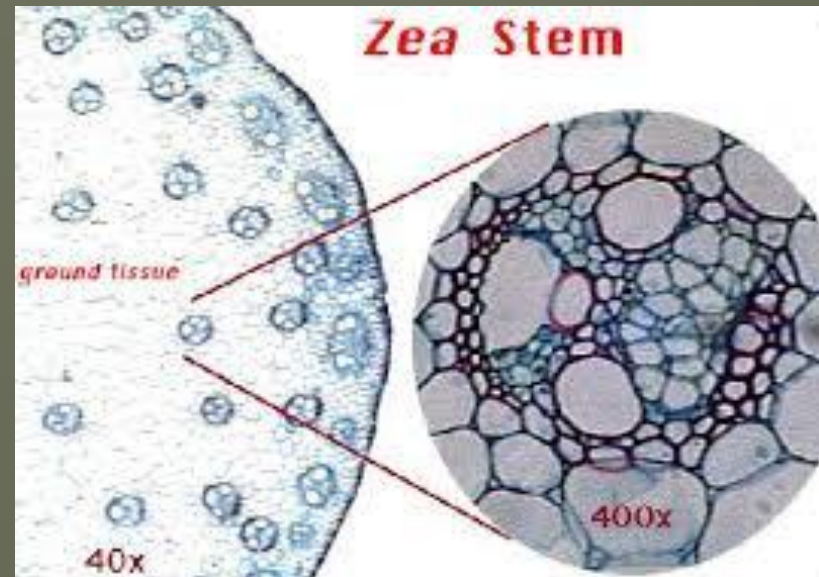
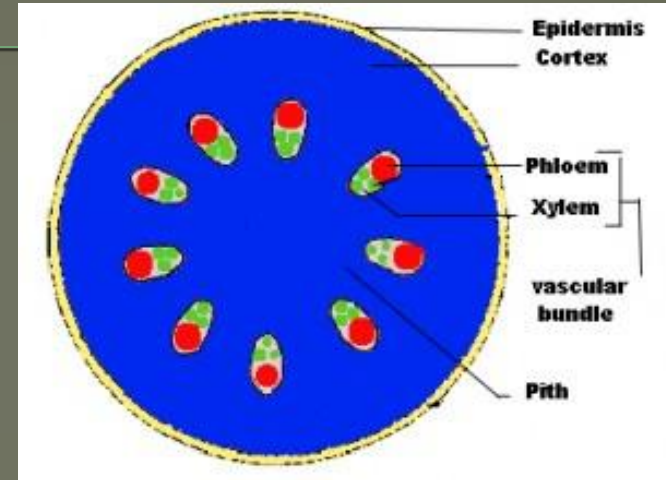
Herbicide Flow

NON WOODY TISSUE

Vascular bundles

Xylem - up

Phloem – down



Grass Life Cycle Stages

● Annual

- Summer Annual
- Winter Annual

● Perennial



Annual Grasses

- Complete life cycle in one year.



Barnyard grass

Summer Annual

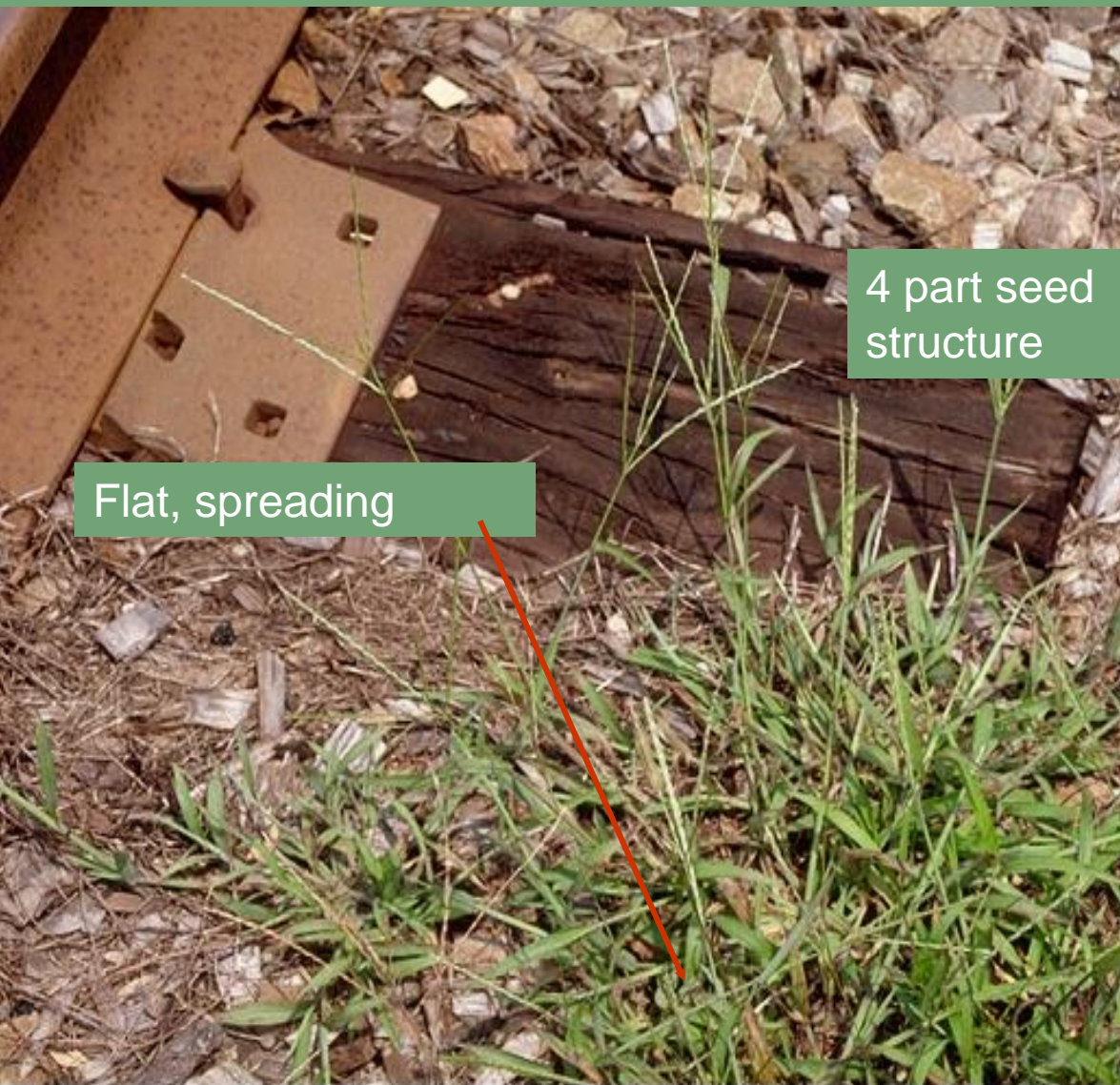


Annual
**Bearded
Sprangletop**



Crabgrass

Summer annual



4 part seed
structure

Flat, spreading



Foxtail - Summer Annual

Compact seed head bent,

straight,

drooping



Perennial Grasses

- Produce vegetative structure (root) that allows them to live more than two years.

● Roots Stolons

Rhizomes

Bermudagrass

Perennial – Stolon



Stolons – horizontal above ground stems

Broomsedge

Perennial

Rhizome



Cattail

Perennial – Creeping Rhizome



Compact brown
flower head

Long narrow
leaves

Rhizomes – horizontal underground stems

Johnson Grass - Creeping Rhizome

Reddish
flower
structure



Tall mature
plant



Reproduces by creeping rhizome
horizontal underground stem



Phragmites (common reed grass)

Rhizomes and Stolons

y:
Old
dservices.com



Quackgrass Perennial Rhizome



Grasses VS Sedges



Round



© 2004 NC State University

Triangle

Yellow Nutsedge



- Perennial bulb

